



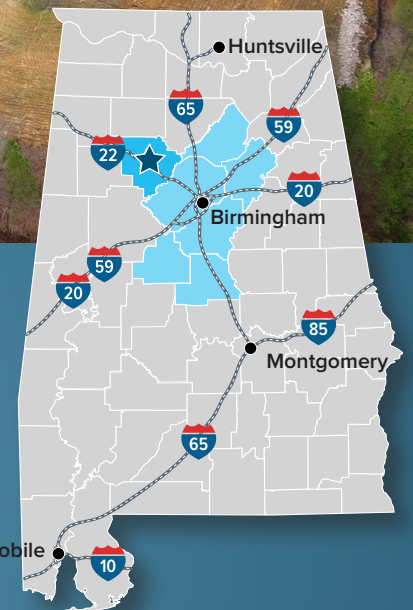
# JASPER GRADED SITE

WHITEHOUSE ROAD, JASPER, AL 35501

Located less than two miles from I-22 – the nation’s newest interstate corridor – this 50-acre, publicly owned site is pad-ready and expandable to 113 acres. Its location within the 350-acre Jasper Industrial Park ideally places it between Birmingham, just 40 minutes southwest, and Memphis, within three hours northwest. Adjacent to the recently opened Tier 1 automotive supplier, Yorozu, and within 250 miles of eleven automotive OEMs, this site is uniquely positioned for automotive and advanced manufacturing.



2 miles to I-22



**11 AUTOMOTIVE OEMS  
WITHIN 250 MILES**

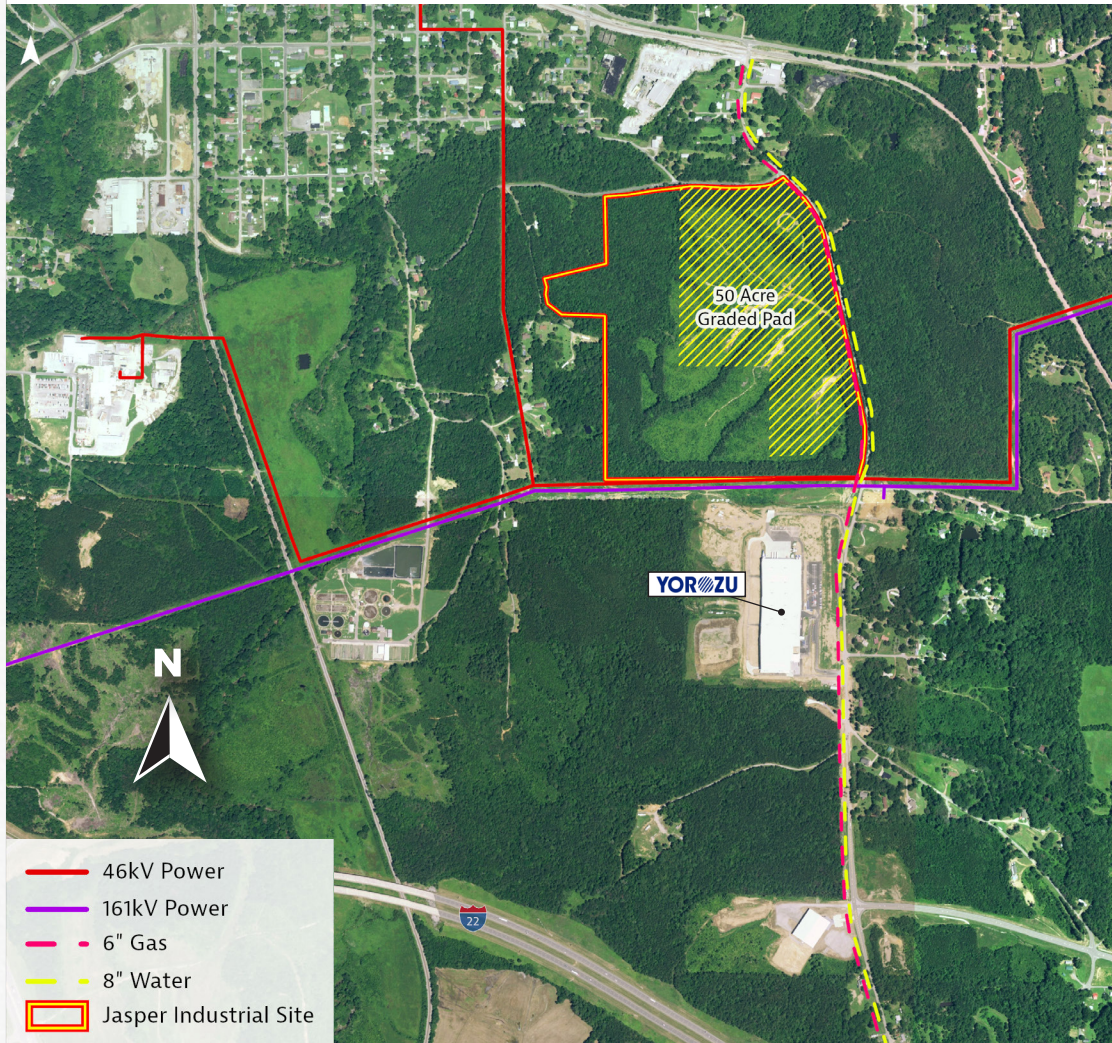


THE BIRMINGHAM METRO HAS ONE OF THE LOWEST  
MANUFACTURING WAGE RATES IN THE SOUTHEAST,  
WITH AN AVERAGE ANNUAL SALARY OF

**\$56,357**

# JASPER GRADED SITE

WHITEHOUSE ROAD, JASPER, AL 35501



Location	
County	Walker
City	Jasper
Metro Area	Birmingham-Hoover, AL

Completed due diligence with no identified encumbrances on-site	
Available acres	113
Pad-ready acres	50
Previous use	Forest
Topography	Flat
✓ Protective covenants	✓ Phase 1 environmental
✓ Preliminary geotech report	✓ Ecological review
✓ Preliminary wetlands assessment	✓ Cultural & historical resources review

All utilities with excess capacity on-site		
Natural gas	Spire	Size of main: 6 inches
Water	Jasper Utility Board	Size of main: 8 inches
Sewer	Jasper Utility Board	Size of main: 12 inches
Electric	Alabama Power	✓ Transmission ✓ Distribution
Fiber/Telecom	AT&T	✓ Fiberoptic

Easy access to 3 interstates and 1 highway	
Interstates	Access within
22	2 miles
65	31 miles
59	43 miles
Four-lane Highways	Access within
78	2 mile

<b>Sale price</b>	<b>\$30,000/acre (negotiable)</b>
-------------------	-----------------------------------

Note: Price is very negotiable based upon job creation



For drone footage and interactive data, please visit <https://www.select-alabama.com/jasper>

**CONTACT US | Birmingham Business Alliance**

Jeff Traywick | [jtraywick@birminghambusinessalliance.com](mailto:jtraywick@birminghambusinessalliance.com) | (205) 241-8130  
 Brian Jennings | [bjennings@birminghambusinessalliance.com](mailto:bjennings@birminghambusinessalliance.com) | (205) 241-8133